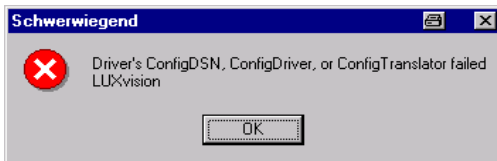


Problem when replacing LUXvision 1.0 by LUXvision 1.5

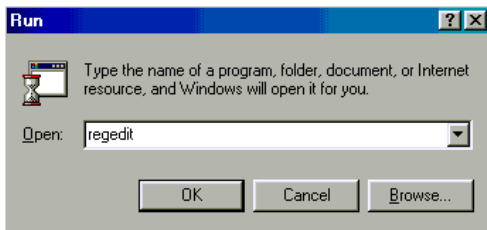
If you have already installed LUXvision 1.0, you will receive the following error during installation of version 1.5:



If you install LUXvision for the first time, this error will not happen.

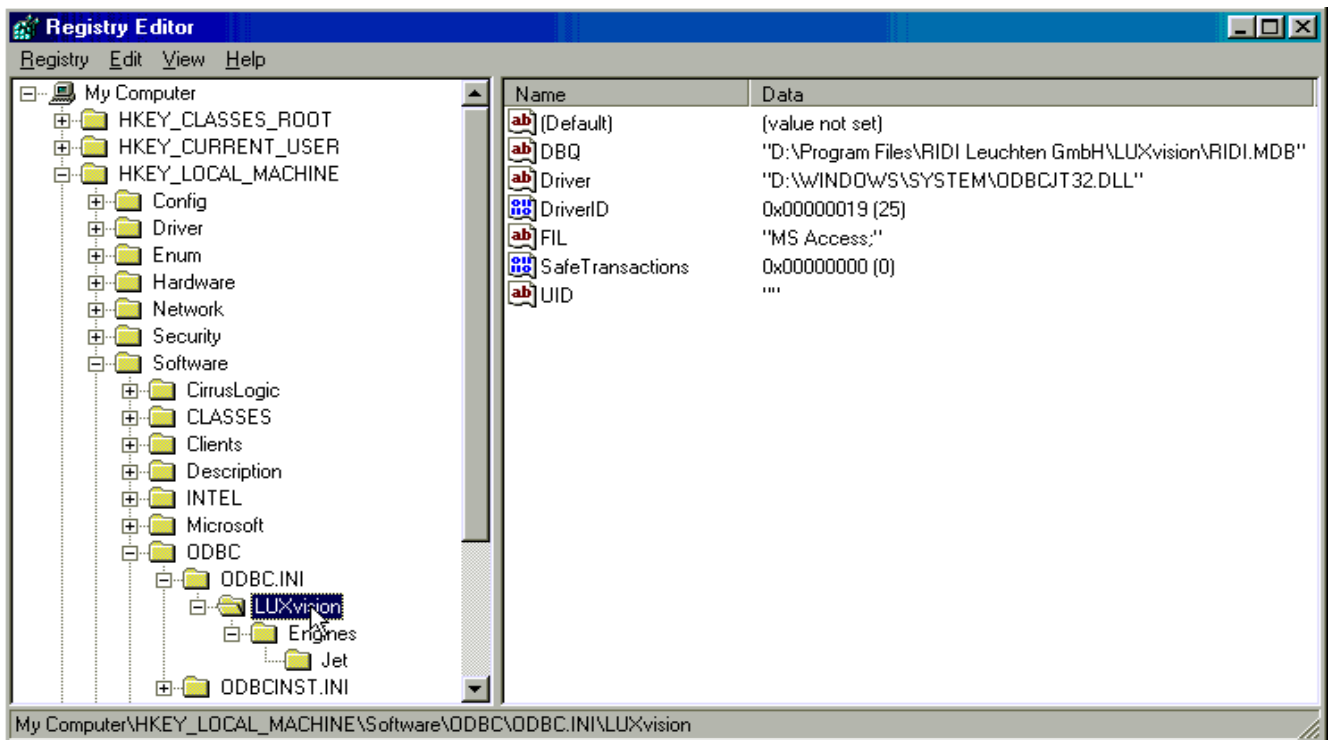
The error can be solved as following:

Please start the registry-editor through the "Start"-button, "Run..." and enter of "REGEDIT" and then press the "OK"-button.



Then delete the blue marked entry

(HKEY_LOCAL_MACHINE\SOFTWARE\ODBC\ODBC.INI\LUXvision) by pressing the "Del"-Key.



ATTENTION:

Only delete the marked entry (LUXvision with Engines and Jet) !!!

Your Windows-System could be damaged through changing/deleting other entries !!!!

Possibly this step should be done by an experienced administrator.

From our WebSite www.ridi.de you also can download the file "DelLUXvision.inf". You will find this file in the section "LUXvision", "Support". By installing this file, the entry will be deleted automatically.

Install LUXvision 1.5 once more.

We regret to cause you inconvenience. But we are sure that you will enjoy the program.

With best regards
RIDI Leuchten GmbH