

Surface/suspended luminaire series ABSBW ..., continuous mounting, wall washers

Luminaire housing: Continuous mounting, angled steel housing, white powder coated. Asymmetric light distribution. The housing is prepared for continuous mounting. The luminaire is supplied without end caps but with fixing materials required for continuous mounting.

Electrical equipment:

- Low-loss ballasts (VVG) or electronic ballasts (EVG) 220-240 V, 0/50-60 Hz
- Radio interference suppression in accordance with EC directives
- Prepared for parallel power factor correction with accessory 0207799 (See page 666).

Luminaire end caps: For the series ABSB, ABSBI and ABSBW two different end piece styles are available:

ABSBKE Plastic end caps matching the shape of the luminaire, in the same colour as the luminaire. Simply clip on to the end of the luminaire or continuous line of luminaires.

ABSBIE End caps matching the shape of the luminaire with inset die-cast zinc corners, white powder coated. One piece is required for each end of the line.

Mounting: The luminaires of this series are designed for mounting using either the ceiling fixing kit and also for pendant mounting. Ceiling fixing kit using the provided slotted washers. Pendant mounting with pendant tubes or steel wires see page. 158. With pendant mounting, compensating weights are required.

Accessories and fixing kits see page 156 to 159.

Continuous mounting: When mounted continuously, the reflector creates a continuous optical effect, resulting in a harmonious appearance for the entire lighting system.

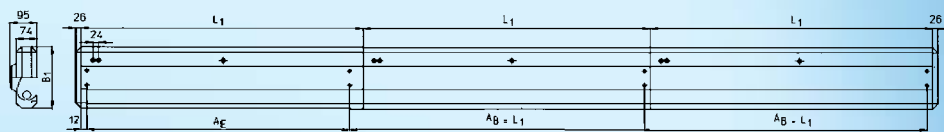
Junctions: Junctions are available for the creation of geometric patterns (see page 156 and 157).

Special models: In response to customer request against a surcharge, the following special models are available:

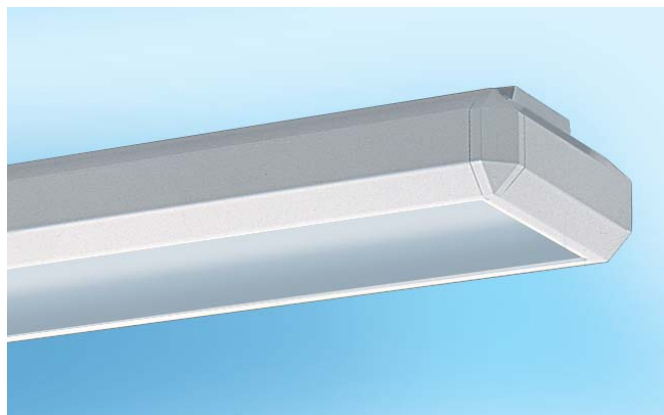
- Non-standard colours in accordance with the RAL colour chart for the luminaire housing
- With prefitted dimmable electronic ballasts
- With prefitted emergency lighting kits in maintained or non-maintained operation mode

Application: These luminaires are predominantly used for illuminating walls, exhibits displayed against walls and shelving.

In sales areas in particular, it is possible to comply with different lighting requirements without changing the optical appearance of the luminaire (all the luminaires of the ABSB series can be used in combination).



Voltage	230V/50Hz
Protection class	IP 20
Approvals	



ABSBW ...

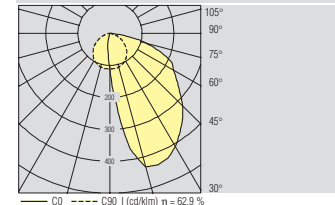
Parabolic reflector

Parabolically formed aluminium reflector made of matt anodised super-purity aluminium, interference-free, suitable for using with triphosphor lamps.

Computer-optimised reflector shape for extremely asymmetric light distribution.

Lighting engineering: Extremely asymmetric distribution. The recommended distance from the wall for optimum vertical illumination is 1/3 of the luminaire mounting height.

ABSBW 158

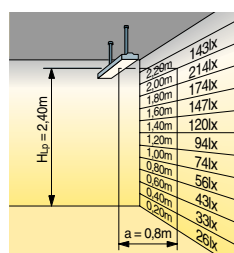
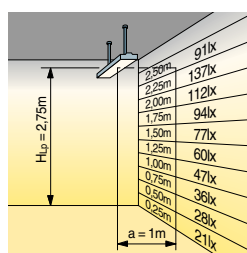
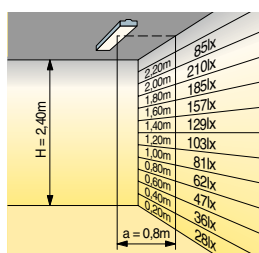
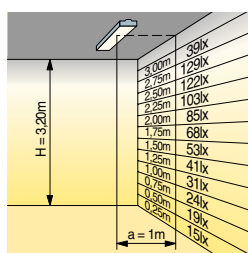


E in lux	MH in m	1 x T26/58W/21 / 5200 lm								
		Room area in m²								
		20	30	40	50	70	80	90	100	
300	1,65	4	6	7	9	11	13	14	15	
	2,15	5	6	8	9	12	14	15	16	
500	2,65	6	7	9	10	13	15	16	17	
	1,65	7	9	12	14	18	21	23	25	
	2,15	8	10	13	15	20	22	25	27	
	2,65	9	12	14	17	21	24	26	29	

Maintenance factor: 0,67

►► Lighting data: www.ridi.de

Model	Lamps	Dimensions [mm]						Weight [kg]	Prod. code with VVG	Prod. code with EVG
		L ₁	B ₁	H ₁	A ₁	A _E	A _S			
ABSBW 118	1xT26/18 W	620	213	90	400	556	220	3,4	0611308	0621308
ABSBW 136	1xT26/36 W	1234	213	90	950	1210	284	5,4	0611309	0621309
ABSBW 158	1xT26/58 W	1534	213	90	1250	1510	284	7,9	0611310	0621310
Accessories		Description								Prod. code
ABSBIE 1	End piece for 1-lamp luminaires, 1 piece									
ABSBKE 1	End piece for 1-lamp luminaires, made of plastic, 1 piece									0201753



ABSBW..

Wall washers with optimum asymmetric light distribution for illumination of vertical surfaces.

The specified values refer to a lamp output of 1000 lm. Depending on the lamp used, the values must be adjusted accordingly.

Maintenance Factor: 0.8

Degree of reflection: C/W/F 70/50/20