

## Recessed luminaire series EML/EMML K ... W

**Luminaire body:** Recessed luminaire, single luminaire, white immersion painted steel housing. For fitting with compact fluorescent lamps TC-L.

For mounting in different ceiling systems.

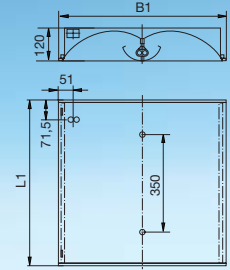
The luminaire body accommodates all electrical components and fixings for the primary and secondary reflector.

**Electrical equipment:**

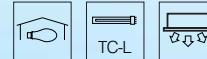
- Low-loss ballasts (VVG), or electronic ballasts (EVG) 220-240V, 0/50-60 Hz
- Terminal block 5x2.5 mm<sup>2</sup>
- Radio interference suppression in accordance with EC directives
- Prepared for parallel power factor correction with accessory 0207799 (see page 666).

**Mounting:** For use with different ceiling systems for fixing using universal fixing kits 10-013 or 10-017.

Or lay-in installation in ceiling systems with exposed T-bars and lay-in ceiling tiles. No additional fixing accessories are required for this.



Voltage	230V/50Hz
Protection class	IP 20
Approvals	



### EML K ... W

**Primary reflector W:**

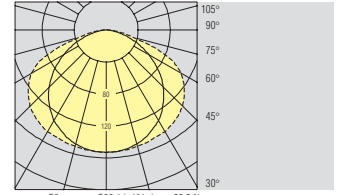
Semi-circular section white steel reflector. With lay-in opal plastic foil.

**Secondary reflector:**

Parabolic reflectors made of matt, white coated aluminium.

The reflectors are suspended in the luminaire housing and click into spring catches at the edge of the luminaire body.

### EML K 155 W



— C0 --- C90 I (cd/klm) η = 50.6 %

E in lux	MH in m	Room area in m <sup>2</sup>									
		20	30	40	50	70	80	90	100	110	120
300	1,65	6	8	9	11	15	17	18	20	22	23
	2,15	6	8	10	12	16	18	20	22	23	24
	2,65	7	9	11	13	17	19	21	23	24	25
500	1,65	9	12	15	18	24	27	30	33	36	38
	2,15	10	14	17	20	26	29	33	36	38	40
	2,65	12	15	19	22	28	32	35	38	40	42

Maintenance factor: 0.67

►► Lighting data: [www.ridi.de](http://www.ridi.de)

Model	Lamps	Dimensions [mm]		Ceiling cut-out		Ceiling type	Weight [kg]	Prod. code with VVG	Prod. code with EVG
		L <sub>1</sub>	B <sub>1</sub>	L <sub>E</sub>	B <sub>E</sub>				
EML K 140 W-EVG	1xTC-L/40 W	622	622	604	604	1 2 3 4	5,5		0821811
EML K 155 W-EVG	1xTC-L/55 W	622	622	604	604	1 2 3 4	5,5		0821812
EML K 236 W	2xTC-L/36 W	622	622	604	604	1 2 3 4	6,1	0811813	0821813
EML K 240 W-EVG	2xTC-L/40 W	622	622	604	604	1 2 3 4	5,7		0821814
EML K 255 W-EVG	2xTC-L/55 W	622	622	604	604	1 2 3 4	5,7		0821815



### EMML K ... W (Module 600)

**Primary reflector W:**

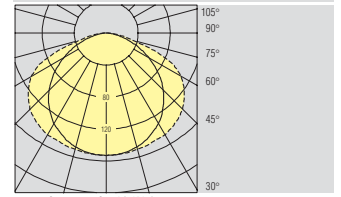
Semi-circular section white steel reflector. With lay-in opal plastic foil.

**Secondary reflector:**

Parabolic reflectors made of matt, white coated aluminium.

The reflectors are suspended in the luminaire housing and click into spring catches at the edge of the luminaire body.

### EMML K 155 W



— C0 --- C90 I (cd/klm) η = 50.6 %

E in lux	MH in m	Room area in m <sup>2</sup>									
		20	30	40	50	70	80	90	100	110	120
300	1,65	6	8	10	12	16	18	19	21	23	24
	2,15	7	9	11	13	17	19	21	23	24	25
	2,65	7	10	12	14	18	20	22	24	25	26
500	1,65	9	13	16	20	26	29	32	35	38	40
	2,15	11	14	18	21	28	31	34	38	40	42
	2,65	12	16	20	23	30	33	37	40	42	45

Maintenance factor: 0.67

►► Lighting data: [www.ridi.de](http://www.ridi.de)

Model	Lamps	Dimensions [mm]		Ceiling cut-out		Ceiling type	Weight [kg]	Prod. code with VVG	Prod. code with EVG
		L <sub>1</sub>	B <sub>1</sub>	L <sub>E</sub>	B <sub>E</sub>				
EMML K 140 W-EVG	1xTC-L/40 W	597	597	579	579	1 2 3 4	5,5		0821791
EMML K 155 W-EVG	1xTC-L/55 W	597	597	579	579	1 2 3 4	5,5		0821792
EMML K 236 W	2xTC-L/36 W	597	597	579	579	1 2 3 4	6,1	0811793	0821793
EMML K 240 W-EVG	2xTC-L/40 W	597	597	579	579	1 2 3 4	5,7		0821794
EMML K 255 W-EVG	2xTC-L/55 W	597	597	579	579	1 2 3 4	5,7		0821795
Accessories	Description								Prod. code
10-013	Universal fixing kit, clamping thickness 25 ... 54 mm								0210013
10-017	Universal fixing kit, clamping thickness 40 ... 80 mm								0210017