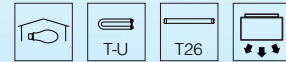
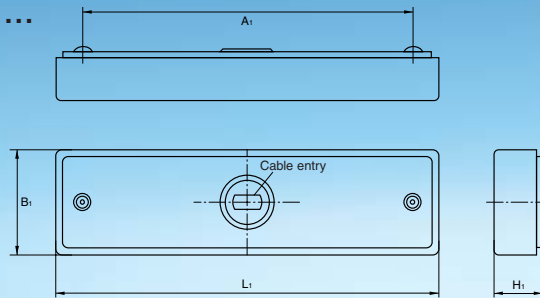


Diffuser luminaire series K ...

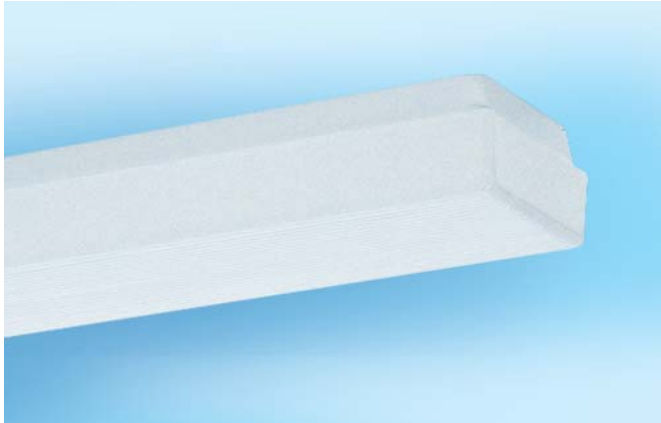
Luminaire housing: Deep drawn, torsion resistant steel housing, white powder-coated. Diffuser holding springs.

Electrical equipment:

- Ballasts (KVG), 230 V, 50 Hz
- Connector block 3x1.5 mm²
- Radio interference suppression in accordance with EC directives
- Prepared for parallel power factor correction with accessory 0207799 (see page 666).



Voltage	230V/50Hz
Protection class	IP 40
Approvals	



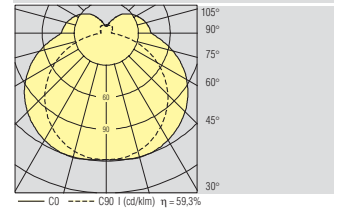
K ...

Opal diffuser

Plastic one piece diffuser with stable corners made of UV-resistant Plexiglas. Good light refraction, resulting in wide beam light distribution.

For replacement diffusers, see page 591.

K 218



Quick calculation table (Reflectances: 70/ 50/ 20)

2 x T26/18W/21 / 2900 lm

E in lux	MH in m	Room area in m ²								
		20	30	40	50	70	80	90	100	
300	1,65	10	13	16	19	25	28	31	34	
	2,15	11	15	18	22	28	31	34	37	
500	1,65	16	21	27	32	42	46	51	56	
	2,15	19	24	30	36	46	51	56	61	

Maintenance factor: 0,67

►► Lighting data: www.ridi.de

Model	Lamps	Dimensions [mm]				Weight [kg]	Prod. code with KVG
		L ₁	B ₁	H ₁	A ₁		
K 40	1xT-U/40 W	660	170	80	460	2,5	0400233
K 218	2xT26/18 W	660	170	80	460	2,6	0400237
K 65	1xT-U/65 W	820	170	80	660	3,5	0400077



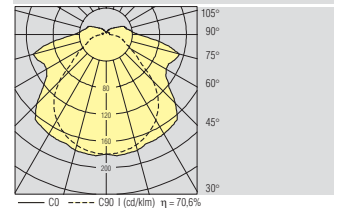
K ... PR

Prismatic diffuser PR

Prismatically structured one piece diffuser with stable corners made of highly transparent UV-resistant Plexiglas. High LOR and wide beam light distribution.

For replacement diffusers, see page 591.

K 218 PR



Quick calculation table (Reflectances: 70/ 50/ 20)

2 x T26/18W/21 / 2900 lm

E in lux	MH in m	Room area in m ²								
		20	30	40	50	70	80	90	100	
300	1,65	8	10	13	16	20	23	25	27	
	2,15	9	12	14	17	22	25	27	30	
500	1,65	10	13	16	19	24	27	29	32	
	2,15	13	17	21	26	34	37	41	45	
500	2,15	15	19	24	28	37	41	45	49	
	2,65	17	22	26	31	40	44	49	53	

Maintenance factor: 0,67

►► Lighting data: www.ridi.de

Model	Lamps	Dimensions [mm]				Weight [kg]	Prod. code with KVG
		L ₁	B ₁	H ₁	A ₁		
K 40 PR	1xT-U/40 W	660	170	80	460	2,5	0400235
K 218 PR	2xT26/18 W	660	170	80	460	2,6	0400239
K 65 PR	1xT-U/65 W	820	170	90	660	3,5	0400089